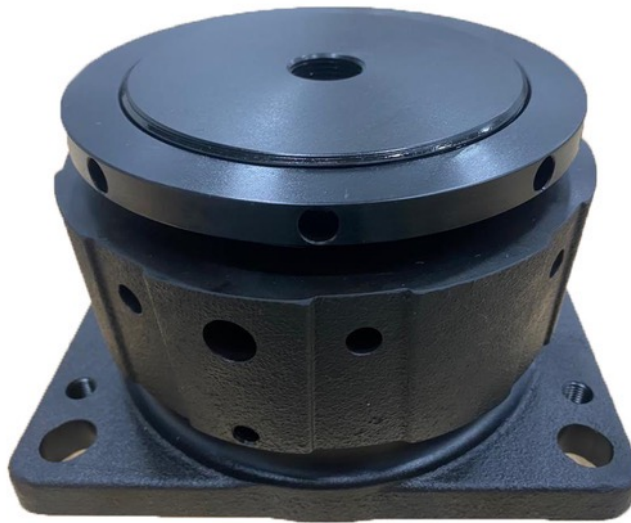


Steel Spring instead of Rubber!



### Features

- Superior vibration insulation
- No setting of rubber parts (a.k.a. Creep)
- Not sensitive for mineral oil/chemicals
- No re-alignment necessary
- Operation up to 150° continuously possible
- Long service life
- Housing of ductile cast iron with surface treatment
- Dimensionally interchangeable
- Different spring stiffnesses available to match the needed capacity
- Both Generator and Main engine executions available

# Technical Information CR1-G

Model	Marine Load [kN]	Static Load [kN]	Static Def. [mm]	Nat. freq. [rpm]
50	25	29	12.3	270
55	30	35	13.3	260
60	36	40	12.1	272
70	42	47	11.2	283
80	47	53	11.8	276

