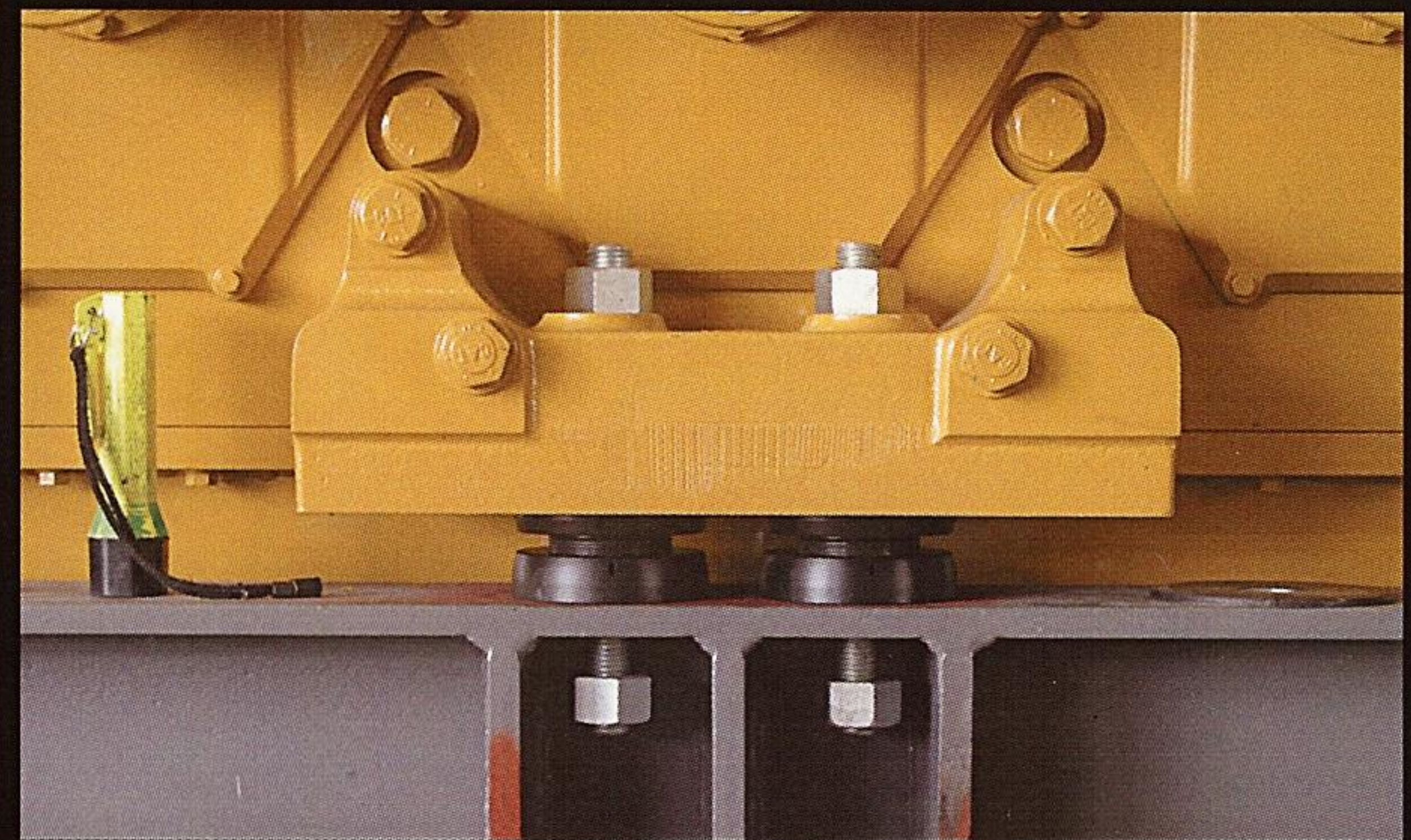
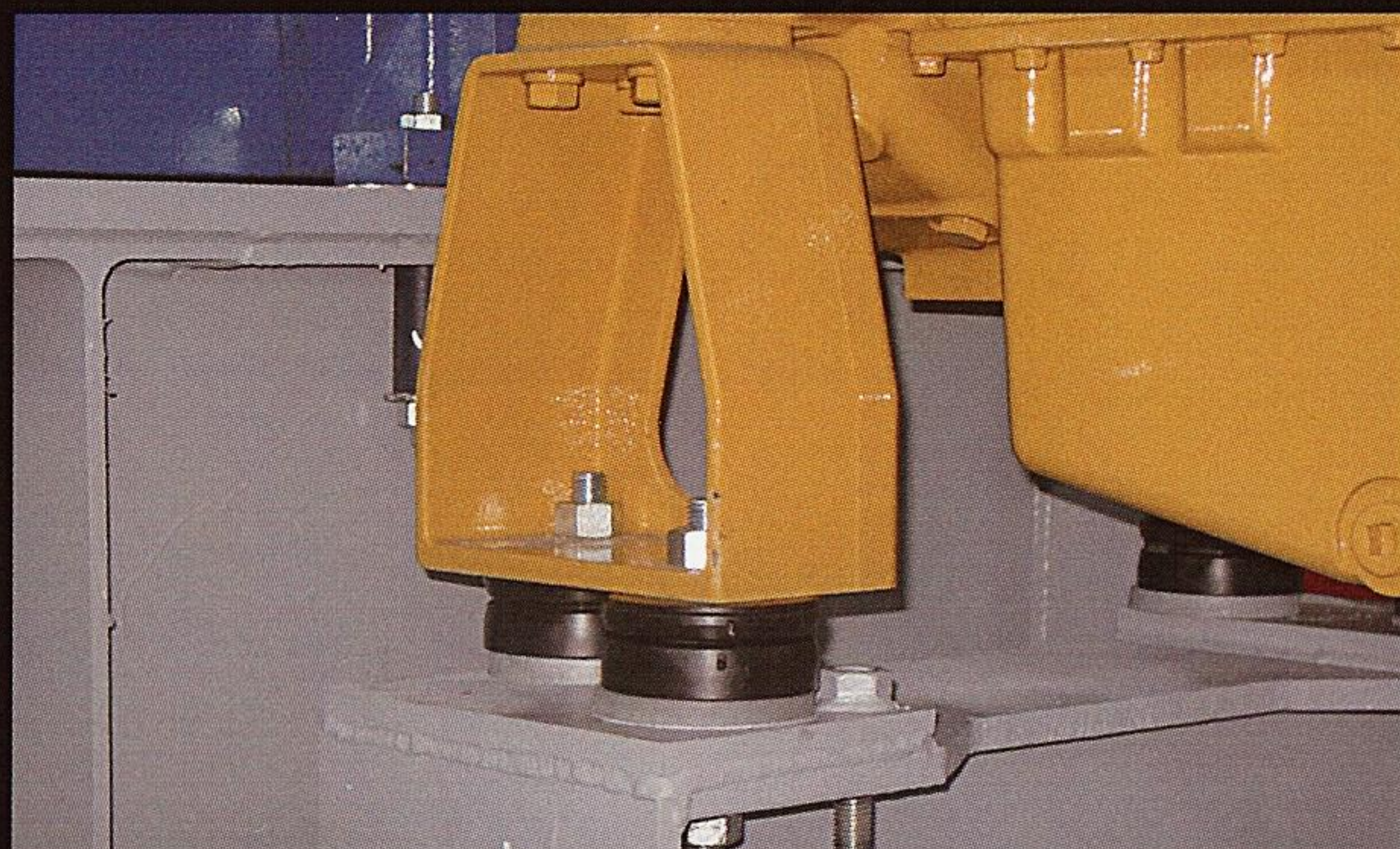


# RotaChock®

adjustable  
economical  
self leveling  
re-usable



power generation



gas / oil transmission

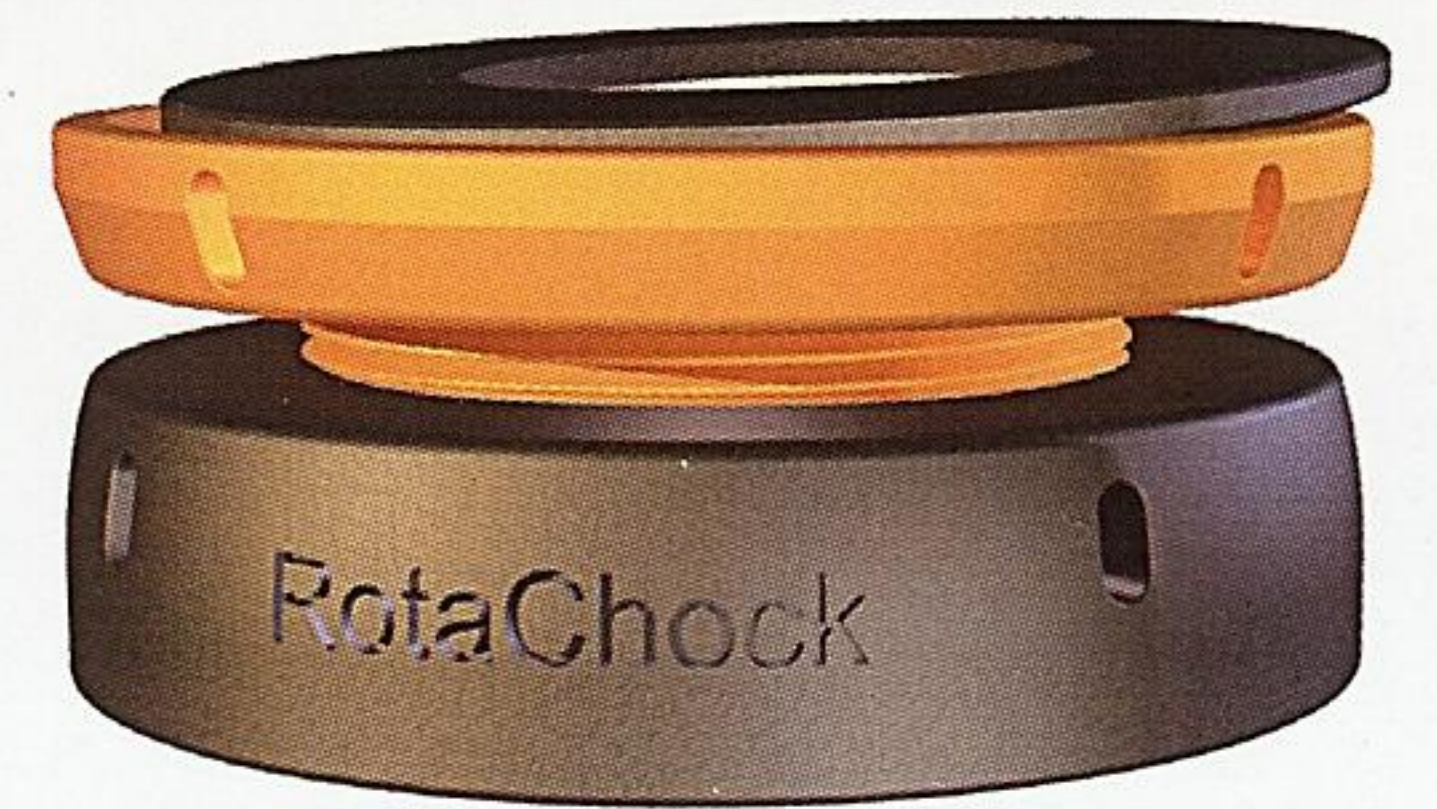


pump systems

**RotaChock for all rotating machines**

[www.rotachock.com](http://www.rotachock.com)

# RotaChock®



P/N	maximum element load [kN]	outside Ø [mm]	design height [mm]	minimum height [mm]	maximum height [mm]	reduced minimum height [mm]	standard bolt hole Ø [mm]	maximum bolt hole Ø [mm]	weight [kg]
RC2	100	51	34	30	38	23	15	17	0,5
RC3	150	76	40	35	45	26	20	27	1,0
RC4	200	102	47	40	53	28	27	30	2,5
RC4.5	300	114	51	45	60	31	30	34	3,5
RC5	400	127	56	50	69	32	34	40	4,5
RC6	600	152	66	55	76	35	41	46	7,0
RC7	900	178	69	60	78	43	48	54	10
RC8	1200	203	79	70	88	53	54	62	15
RC9	1600	229	84	75	93	58	70	76	20
RC10	2000	254	89	80	98	63	79	85	27

## Configuration options:

tall line  
tall top parts

## Materials:

carbon steel  
alloy steel  
316L stainless

## RotaChock ACE, Anti-Corrosion Enhanced

The ACE is a rugged solution for rust problems. We have implemented a new material process to our RotaChock products.

## Simply the Best!

- Adjustment range
- Minimize installation time
- Simple re-adjustment
- Cost effective
- No soft foot



[www.rotachock.com](http://www.rotachock.com)

**exakt**align<sup>AB</sup>

Box 4117, SE-422 55 Hisings Backa, Sweden  
W [www.exaktalign.com](http://www.exaktalign.com) T +46 (0)31 583 100  
E [info@exaktalign.com](mailto:info@exaktalign.com) F +46 (0)31 583 105